

Jan 2006 - Excellent sample recovery in soft clays and sand



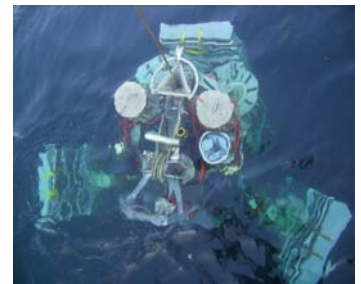
Trial Launch from ROV Supplier

Benthic Geotech recently completed safe and successful drilling, sampling and insitu testing at the Maari field, Cook Strait, New Zealand for OMV New Zealand Ltd. The project was completed with negligible equipment down-time due to breakdown or maintenance.

The investigation provided geotechnical data for foundation design to support a new well head platform. Sampling and CPT testing was undertaken at 24 locations to represent an area appropriate for the gravity based foundation.

Project Details

Date	Dec. 2005 – Jan. 2006
Location	New Zealand
Vessel	53m DP1 ROV Supplier
Geology	Soft clayey SILTS overlaying medium dense SANDS
Description	Multiple borings to a max. depth of ML-34m with continuous sampling and continuous CPTs



PROD on its way to the sea-bed

Significant achievements at Maari using PROD

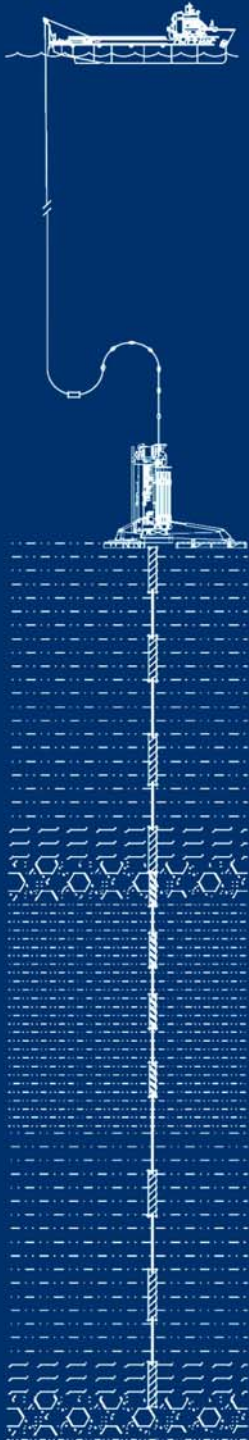
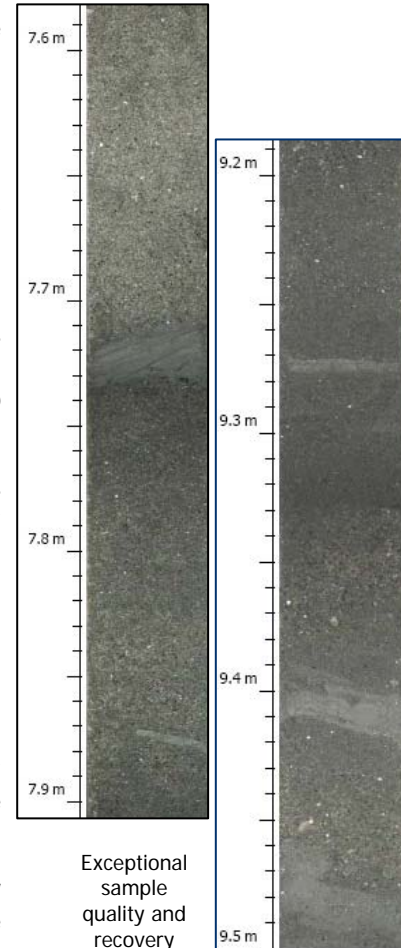
PROD provided a number of extra benefits to the client. These included:

- Detailed and accurate characterisation of surface soft soil layers. Supported on its broad skirted footings, PROD imparted negligible disturbance to the soft seabed enabling accurate definition of the thickness of the soft silt layer at seabed, and good depth control of the drilling operations.
- PROD's piston sampling system recovered near continuous 2.75m long samples. Exceptional sample recovery was achieved in all materials, including clean sands. The high quality samples enabled the layered nature of the materials to be clearly observed.

Excellent productivity was achieved. The 24 investigative holes were carried out in only 8 deployments of PROD. CPT testing at 17 locations delivered 180m of 18-bit CPTu data. Sampling at 7 locations, using the unique combination of controlled piston and the newly designed core catcher, resulted in 114m of silt and sand samples being obtained, with full recovery in both silts and sands. All work was completed in five days total operating time.

OMV's representative on board commented: "PROD is the ideal tool for this type of gravity structure with skirted foundations at this site. The productivity, reliability and sample quality of the PROD system well exceeded our expectations."

The foundation design consultant said: PROD's ability to clearly identify the soft surface layer and the softer lenses within the dense sand has been very helpful to the detailing of our foundation design."



Contact
 Peter Williamson
 Chief Executive Officer
 Benthic Geotech Pty Ltd
 enquiries@bgt.com.au
 Phone: +612 9833 4004
 Fax: +612 9623 6199
 Web: www.bgt.com.au

Head Office
 Benthic Geotech Pty Ltd
 8-10 Leeds Street
 Rhodes NSW 2138
 Australia